

# **Application note: How to update Guppy/Guppy PRO/Pike/Stingray firmware**



---

## Trademarks

Microsoft, Windows, Windows 7, Windows Vista, Windows XP and Windows 2000 are either registered trademarks or trademarks of Microsoft Corporation in the United States and/or other countries.

## Prerequisites

The following items will be needed:

### Hardware:

- A computer running Windows 7, Windows Vista, Windows XP, or Windows 2000 operating system, as well as a FireWire cable.

### Software:

- AVT FirePackage 2.5 with SmartView 1.7 or greater (For Guppy PRO: current AVT FirePackage with SmartView 1.12 or greater)
- The programming \*.xml file.

## Updating the camera

### Note



Please update camera firmware only if a specific known new feature is essential for your application. While very rarely occurring, a small percentage of update attempts can put the camera into a firmware condition that requires servicing at AVT facilities.

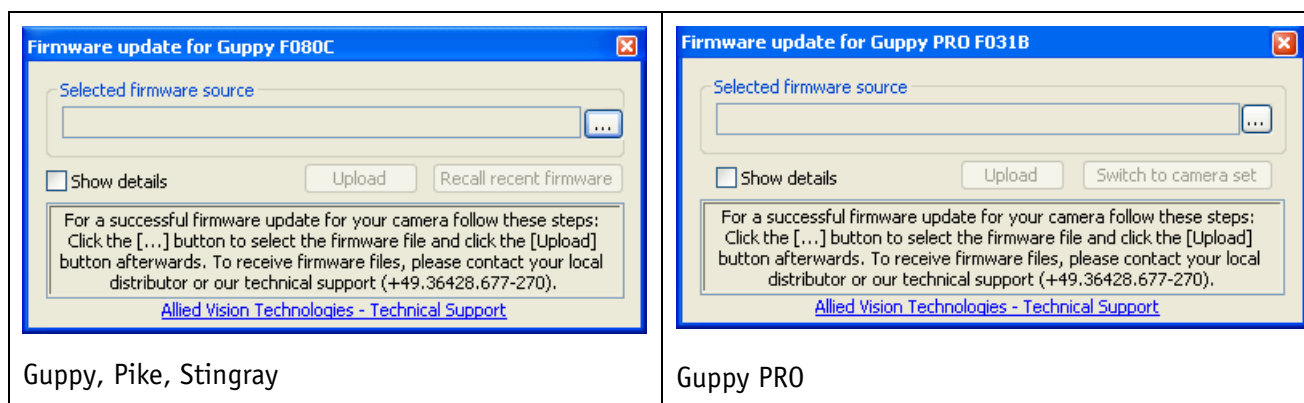
### Note




During update process the camera must get powered all the time.  
If you disconnect the camera from power supply, the camera may fall in secure mode.  
In this case it may be, that the camera must be sent to AVT for reinitialization.

1. Start the SmartView 1.7 (or greater) software by double-clicking **SmartView\_1\_7\_x.exe** (or greater). For Guppy PRO: SmartView 1.12. If SmartView is already running and a viewer window is open, close the viewer window.
2. Choose your camera. In the SmartView menu click **Update firmware** or right-click in the SmartView window and choose **Update firmware**.


The firmware update dialog opens.



3. To find out the firmware versions activate the **Show details** check box.

|                                                                                                      |                                                                                                                                                                                                                                   |
|------------------------------------------------------------------------------------------------------|-----------------------------------------------------------------------------------------------------------------------------------------------------------------------------------------------------------------------------------|
| <p><b>Note</b></p>  | <p><b>Only Guppy/Pike/Stingray:</b></p> <p><b>Keep in mind the bootloader version.</b></p> <p><b>If the bootloader version changes</b> with the new firmware update, the firmware update process has to be done <b>twice</b>.</p> |
|------------------------------------------------------------------------------------------------------|-----------------------------------------------------------------------------------------------------------------------------------------------------------------------------------------------------------------------------------|

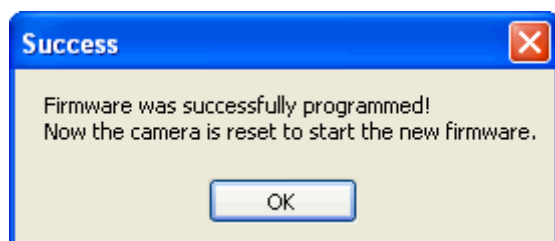
4. Click the ellipsis button (...) and select a firmware file for your camera.

|                                                                                                        |                                                                                                                                                                                                                                                                                |
|--------------------------------------------------------------------------------------------------------|--------------------------------------------------------------------------------------------------------------------------------------------------------------------------------------------------------------------------------------------------------------------------------|
| <p><b>Note</b></p>  | <p>You are only allowed to select files with a short version of the camera name in the file name.</p> <p>Example: GF080c</p> <p>This ensures that only the correct file is selected. Only if the file contains a valid firmware set, the Upload button will become active.</p> |
|--------------------------------------------------------------------------------------------------------|--------------------------------------------------------------------------------------------------------------------------------------------------------------------------------------------------------------------------------------------------------------------------------|

5. Click **Upload**.

The firmware found in the file is uploaded to the camera. A progress dialog is displayed.

The following success message is displayed:



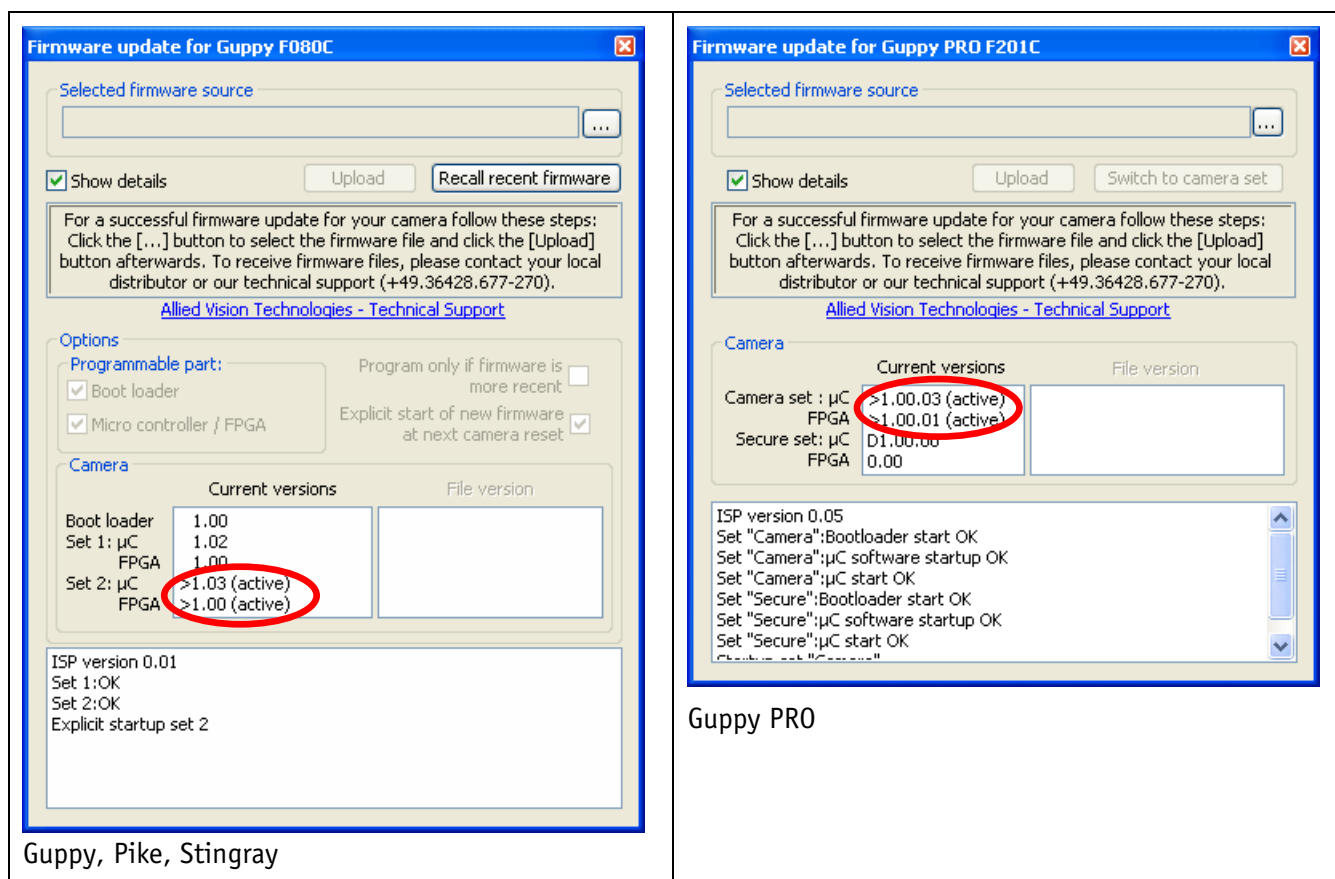
The camera is reset to start the new firmware.

For **Guppy/Pike/Stingray** only: **If the bootloader version changed:** select firmware source again and click **Upload** a second time.

6. To check if the uploaded firmware is active now, do the following: In the SmartView menu click **Update firmware** or right-click in the SmartView window and choose **Update firmware**.

The firmware update dialog with the new firmware version(s) opens.

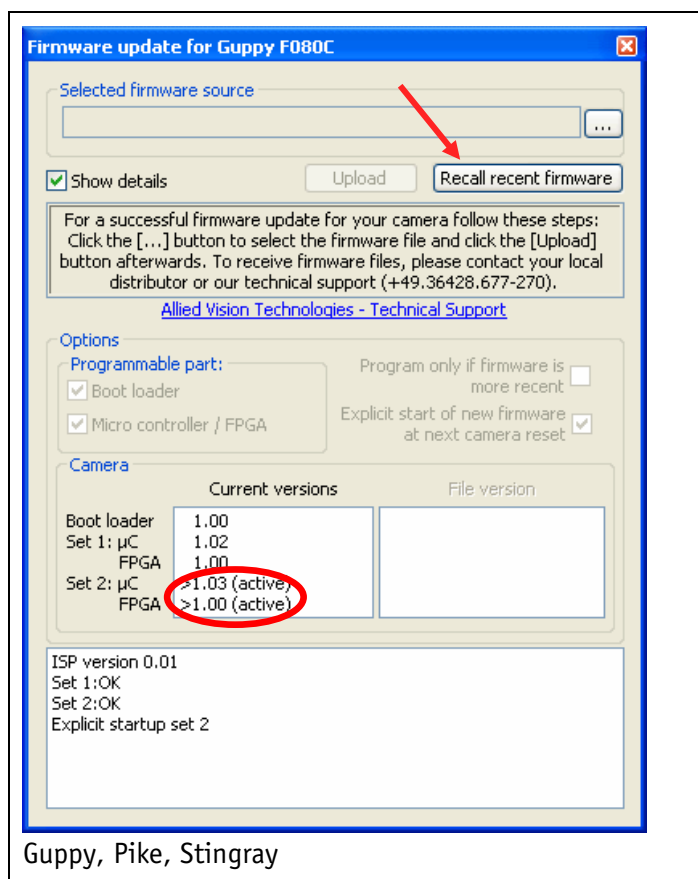
7. If not done yet, activate **Show details** check box.



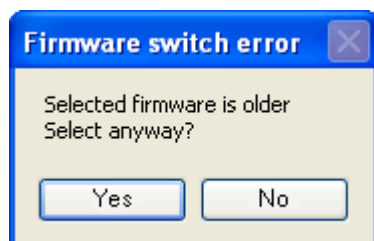
## Recalling recent software (Guppy / Pike / Stingray)

To revert to a previously used firmware set (different version number than the one currently used) perform the following steps:

1. Start the SmartView 1.7 (or greater) software by double-clicking **AVT\_SmartView\_1\_7.exe** (or greater). If SmartView is already running and a viewer window is open, close the viewer window.
2. In the SmartView menu click **Update firmware** or right-click in the SmartView window and choose **Update firmware**.  
The firmware update dialog opens.
3. Click on **Recall recent firmware**.

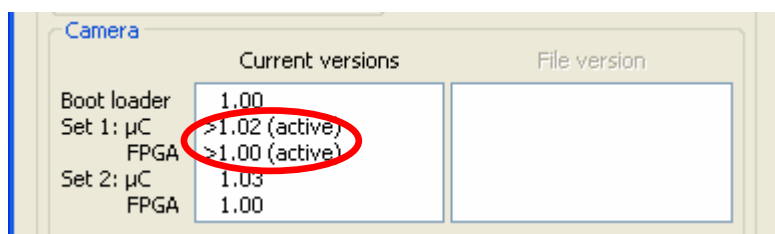


A warning message opens:



4. Click on **Yes**, to switch to the older firmware version.

The passive firmware set is selected as the new startup set, and the camera is reset to start the other firmware.



#### Note



If by chance you have programmed the same firmware multiple times, you still have the possibility of programming the original firmware. You get the original firmware through AVT's technical support.

---

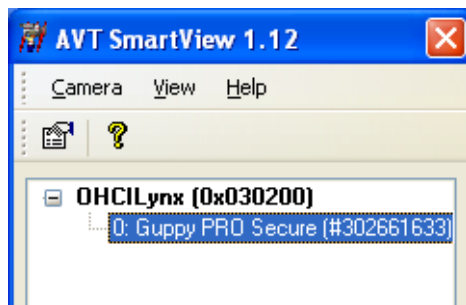
## Switch to camera set (Guppy PRO only)

### Note



Only switch to camera set that is practicable. That's only important if a firmware update failed e.g. due to power loss during update process. On next start of firmware update the secure set is automatically loaded, so that you can do a firmware update again. The secure set itself is not able to acquire images, for example.

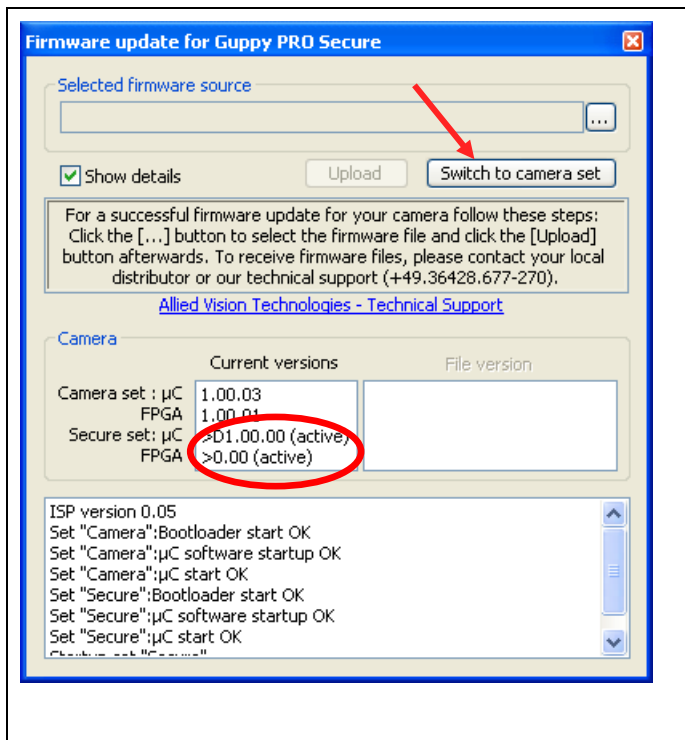
To switch to the camera firmware set perform the following steps:



1. Start the SmartView 1.12 (or greater) software by double-clicking **AVT\_SmartView\_1\_12.exe** (or greater). If SmartView is already running and a viewer window is open, close the viewer window.
2. In the SmartView menu click **Update firmware** or right-click in the SmartView window and choose **Update firmware**.

The firmware update dialog opens.

3. Click on **Switch to camera set**.



---

## **Camera Compatibility with IEEE 1394 software, supplied by AVT and third party software**

All AVT cameras are tested for compatibility with the most recent versions of AVT software packages (AVT FirePackage, AVT ActiveFirePackage, etc.) as well as third party software packages.

It is highly recommended to always use newest versions, available from the website

<http://www.alliedvisiontec.com/emea/products/software.html>

### **Disclaimer**

Due to continual product development, technical specifications may be subject to change without notice. All trademarks are acknowledged as property of their respective owners. We are convinced that this information is correct. We acknowledge that it may not be fully comprehensive. Nevertheless we cannot be held responsible for any damage in equipment or subsequent loss of data or whatsoever in consequence of following the application note. Copyright © 2011

This document was prepared by the staff of Allied Vision Technologies GmbH ("AVT") and is the property of AVT, which also owns the copyright therein. All rights conferred by the law of copyright and by virtue of international copyright conventions are reserved to AVT. This document must not be copied, or reproduced in any material form, either wholly or in part, and its contents and any method or technique available there from must not be disclosed to any other person whatsoever without the prior written consent of the AVT.

We invite comments or constructive criticism on this documentation at any time.

Please write to: [info@alliedvisiontec.com](mailto:info@alliedvisiontec.com)

©11/2011