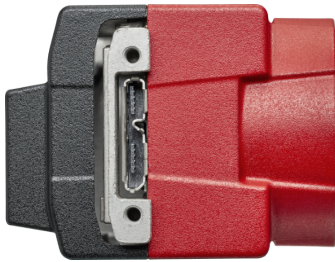


# Alvium

## 1800 U-234c



- IMX249 CMOS sensor
- ALVIUM image processing
- USB3 Vision
- Various hardware options

Hardware option: Closed Housing C-Mount 90°

### **Alvium 1800 U – Your entry into high-performance imaging**

Industrial USB cameras with attractive price-performance ratio

Alvium 1800 U-234 with Sony IMX249 runs 40.0 frames per second at 2.4 MP resolution.

Alvium 1800 U is your entry into high-performance imaging with ALVIUM® Technology for industrial applications. Equipped with the newest generation of sensors, these small and lightweight cameras deliver high image quality and frame rates at the best price-performance ratio. With its USB3 Vision compliant interface and industrial-grade hardware, it is your workhorse for different machine vision applications whether it is on a PC-based or an embedded system.

Easy software integration with [Vimba X](#) and compatibility to the most popular third party image-processing libraries.

In addition to lens mount and housing options, see [Customization and OEM Solutions webpage](#) for additional options.

## Specifications

Product code	18086
Interface	USB3 Vision
Resolution	1936 (H) × 1216 (V)
Spectral range	300 to 1100 nm
Sensor	Sony IMX249
Sensor type	CMOS
Shutter mode	GS (Global shutter)
Sensor size	Type 1/1.2
Pixel size	5.86 μm × 5.86 μm
Lens mount	C-Mount
Optical Filter	Type Hoya C5000 IR cut filter
Max. frame rate at full resolution	40 fps at ≥200 MByte/s, Mono8
ADC	12 Bit
Image buffer (RAM)	256 KByte
Non-volatile memory (Flash)	1024 KByte

### Imaging performance

Imaging performance data is based on the evaluation methods in the EMVA 1288 Release 3.1 standard for characterization of image sensors and cameras. Measurements are typical values for monochrome models measured without optical filter.

### Output

Bit depth	10-bit, 12-bit; Adaptive (10-bit, 12-bit)
Monochrome pixel formats	Mono8, Mono10, Mono10p, Mono12, Mono12p
YUV color pixel formats	YCbCr411_8_CbYYCrYY, YCbCr422_8_CbYCrY, YCbCr8_CbYCr
RGB color pixel formats	RGB8 (default), BGR8
Raw color pixel formats	BayerRG8, BayerRG10, BayerRG10p, BayerRG12, BayerRG12p

## General purpose inputs/outputs (GPIOs)

TTL I/Os 4 programmable GPIOs

## Operating conditions/dimensions

Operating temperature -20 °C to +65 °C (housing)

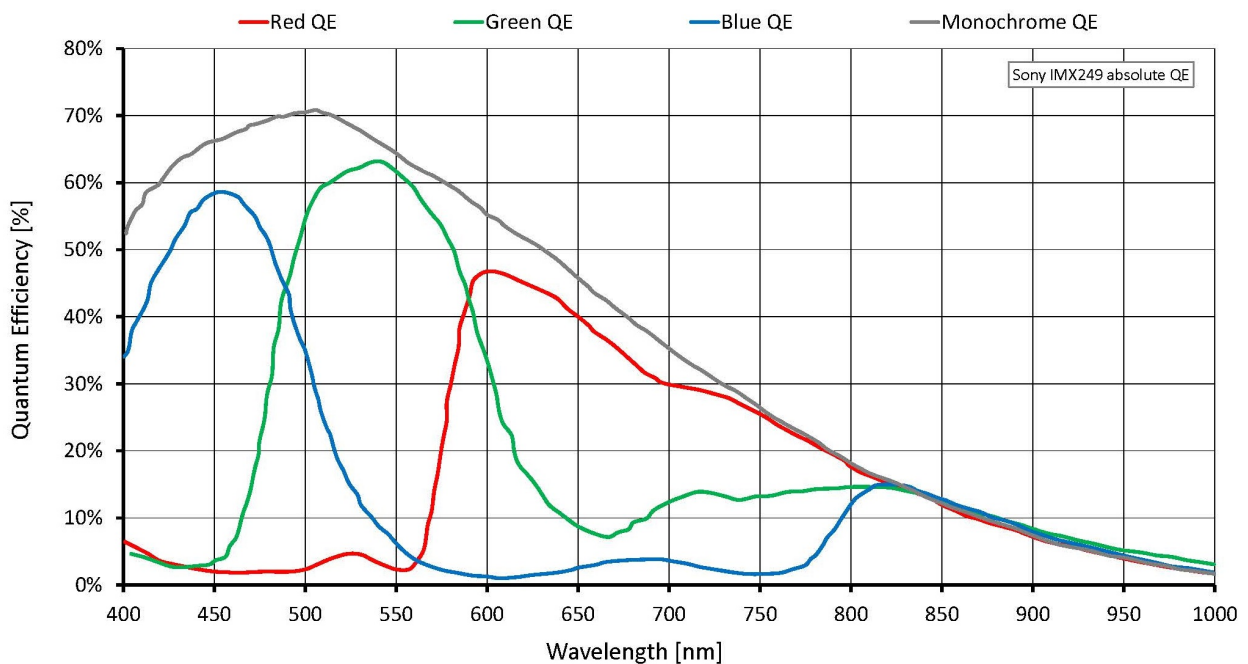
Power requirements (DC) Power over USB 3.1 Gen 1 | External power 5.0 V

Power consumption USB power: 2.1 W (typical) | Ext. power: 2.3 W (typical)

Mass 70 g

Body dimensions (L × W × H in mm) 38 × 32 × 29

## Quantum efficiency



## Features

### Image control: Auto

- Auto exposure
- Auto gain
- Auto white balance (color models)

### Image control: Other

- Adaptive noise correction
- Binning
- Black level
- Color transformation (incl. hue, saturation; color models)
- Contrast
- Custom convolution
- De-Bayering up to 5×5 (color models)
- DPC (defect pixel correction)
- Gamma
- LUT (look-up table)
- Reverse X/Y
- ROI (region of interest)
- Sharpness/Blur

### Camera control

- Acquisition frame rate
- Bandwidth control
- Counters and timers
- Firmware update in the field
- I/O and trigger control
- Readout modes (SensorBitDepth)
- Sequencer
- Serial I/Os
- Temperature monitoring
- U3 Power Saving Mode
- User sets

Technical drawing

